

Amendment #1

The Sailing Instructions are amended in their entirety by the Instructions dated June 15 on the following Pages:

CAPTAIN HARBOR FRIDAY NIGHT SERIES

Presented by:
BHC, IHYC, OGYC, RYC



2010 Sailing Instructions

- Rules** This series will be governed by the Racing Rules of Sailing, the YRA of LIS Non-spinnaker Rules, and by these sailing instructions.
- Schedule** This series will consist of four races with post-race parties to follow: June 11th Riverside Yacht Club, June 18th Belle Haven Club, July 9th Indian Harbor Yacht Club, July 23th Old Greenwich Yacht Club.
- Eligibility** All boats shall register on the Indian Harbor YC website in the CHFNS event. Boats not registered will be assigned a rating of -99 and scored accordingly.
- Teams** Three boat teams can be declared to the IH Sailing Director or designee using the supplemental form no later than June 10th.
- Sails** No spinnakers, gennikers or bloopers. No more than one sail at a time in the fore triangle except during a seaman-like sail change. Whisker poles or spinnaker poles may be used. When in use, it shall be attached to the foremost mast.
- Communication** The committee will monitor and communicate on VHF channel 72.
- Start/Finish** The start/finish line shall be between a white or yellow flag on the Signal Boat and a nearby mark. The start/finish area will be located approximately 200 yards south of Red Rock buoy. When starting, the Signal Boat is to be left to starboard and the starting mark to port. When finishing, the finish is in the direction of the last mark. The committee may reposition the finish line to square the line to the course.
- Divisions**
- | | | |
|--------------|-------------------|----------------------------|
| Division I | Numeral Pennant 1 | 88 and lower (PHRF rating) |
| Division II | Numeral Pennant 2 | 89 to 132 |
| Division III | Numeral Pennant 3 | 133 and higher |
- Starting Sequence** Starting signals will be in accordance with RRS 26.

	≈1854	- pay attention -	A series of short blasts
Division I	1855	Division Warning	1 sound – raise Division Flag(s)
	1856	Division Preparation	1 sound – raise P, I, Z, Z with I, or black flag
	1859		1 sound - drop P, I, Z, Z with I, or black flag
	1900	Division start	1 sound - drop Division Flag(s)
Division II	1900	Warning	1 sound – raise Division Flag(s)
	1901	Preparation	1 sound – raise P, I, Z, Z with I, or black flag
	1904		1 sound - drop P, I, Z, Z with I, or black flag
	1905	Division start	1 sound - drop Division Flag(s)
Division III	1905	Warning	1 sound – raise Division Flag
	1906	Preparation	1 sound – raise P, I, Z, Z with I, or black flag
	1909		1 sound - drop P, I, Z, Z with I, or black flag
	1910	Division Start	1 sound - drop Division Flag

- Signals**
- | | | | |
|-------------------|------------------|--------------------------|---------------------|
| Individual Recall | Code flag X | White with blue cross | One horn signal |
| General Recall | First Substitute | Yellow and blue triangle | Two horn signals |
| Postponement | Answer Pennant | Red and white stripes | Two horn signals. |
| Abandonment | Code flag N | Blue and white checks | Three horn signals. |
| Shorter Course | Code flag S | White with blue square | Two horn signals |

Courses

Pre-configured courses will be signaled from the Signal Boat by a letter beneath the division placard. A division whose placard is not displayed shall sail the same course as the previously displayed division.

See [Race Courses Table](#) for the courses. Marks are in the current “YRA Connecticut Area One-Design Championships Sailing Instructions” including “Marks and Exceptions” shown on the chart (copied below) with the exception that Mark T is the starting mark.

Race Course Table						
Course	Marks	Leave all Marks to...	Wind is from the...	Remarks	Course Distance	
					east end	west end
A	B X	Port	Southeast		2.6	2.6
B	B V X	Port			3.0	2.9
C	B X B X	Port			4.6	4.5
D	AV	Port	South		1.8	2.3
E	A V W	Port			2.6	2.8
F	A W A W	Port			4.2	4.4
G	P L	Starboard			1.9	1.5
H	UL	Starboard			2.1	1.6
I	UP	Port	Southwest		2.1	0.8
J	U P X U	Port			3.8	2.9
K	ULTUL	Starboard		T = starting pin	4.9	3.8
L	HA	Port			5.4	5.2
M	L V	Port			3.0	3.0
N	L P	Port	West		2.9	1.9
O	L P V	Port			3.1	3.1
P	X B	Port	Northwest		2.3	2.3
Q	X P	Port			2.1	2.1
R	X B T B	Port		T = starting pin	3.7	4.2
S	X L B T B	Port			4.5	4.7
T	X B X B	Port			5.2	5.2
U	WA	Port	North		2.1	2.3
V	W V A	Starboard			2.5	2.7
W	V L	Starboard	East		2.8	2.8
X	V P L	Starboard			3.1	3.2
Y	V L V L	Starboard			5.0	5.0
Z	AH	Starboard			5.4	5.2

Hen and Chickens Can C-1A shall be passed on the **North side**. Red Rock Buoy and Newfoundland Reef Buoy shall be passed on the **South side**. The channel between Cormorant Reef and Great Captain Island shall not be used. Marks except T are as defined in the YRA sailing instructions; Mark T is the starting mark.

Time Limit

2100 hours for all divisions.

Scoring

Corrected times will be based on time-on-time allowances using the YRA of LIS PHRF non-spinnaker ratings. The Low Point Scoring System, RRS A4 will apply except that if less than three races are completed, each boat's total score will be the sum of her scores (if three or four races are sailed, each boat's score shall exclude her single worst score). Boats that do not compete in a given race shall be awarded points equal to the number of boats in her division that started that race plus one. Boats scored TLE shall be awarded points equal to the number of boats in her division that finished within the time limit plus two. One race constitutes a series.

Protests

The exoneration penalty available under RRS 44 for a boat that may have broken a rule of Part 2 shall be a One-Turn Penalty consisting of a tack and a jibe taken at the time of the incident. Boats shall report any protest, and any penalty turns taken, to the Race Committee when they finish. Protests shall be written on forms available at each club, and submitted to the Front Desk of the sponsoring club within one hour of the Race Committee Boat having docked (submit to Race Committee if sponsor is OGYC). All protests will initially be arbitrated within the next hour (or as soon as possible) after filing at the sponsoring club. The Protest Arbitration Penalty shall be the 20% Scoring Penalty as described in RRS 44.3(c). When a protest is not resolved by arbitration, a hearing will immediately follow, unless re-scheduled to a later date for the mutual convenience of the participants.

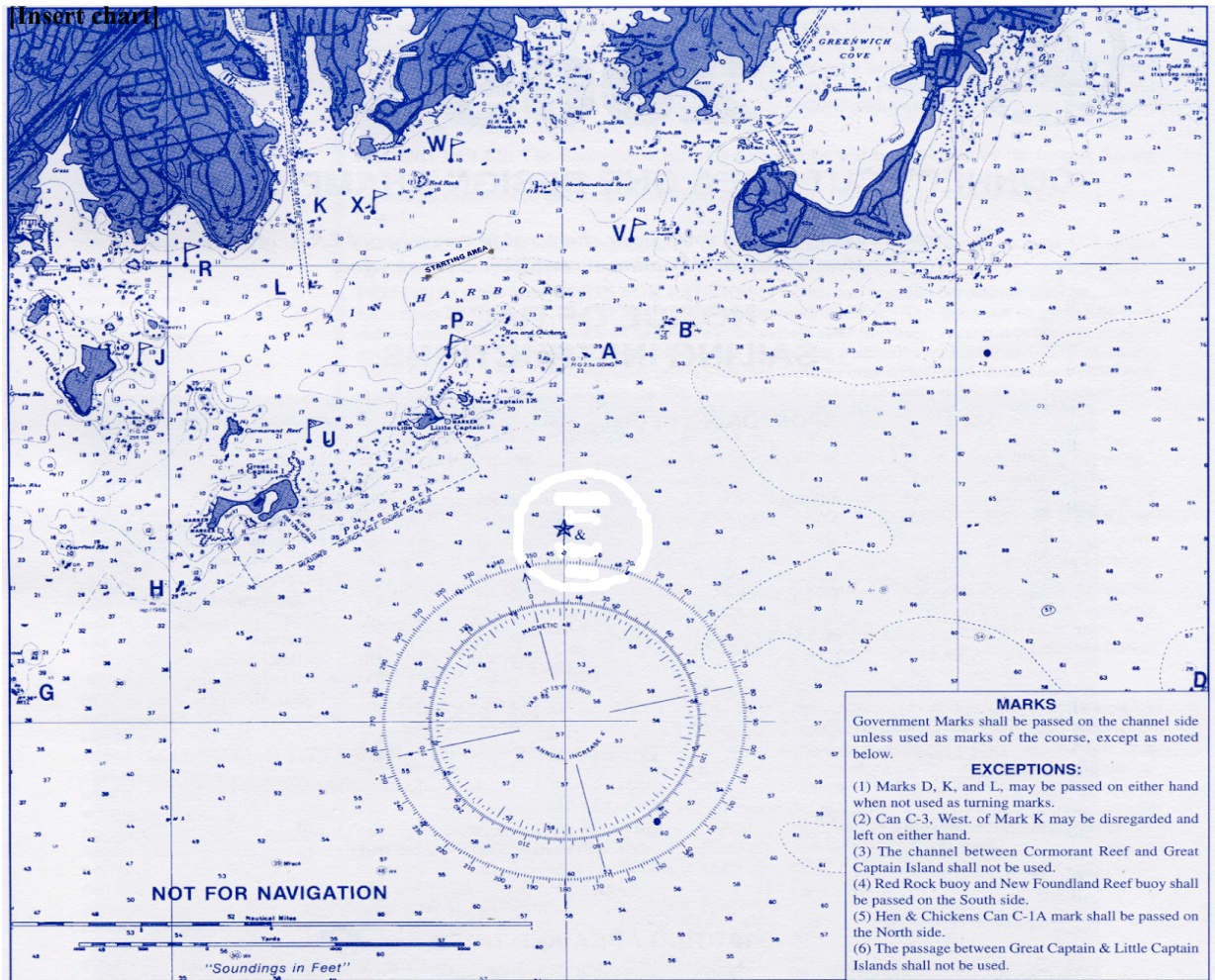
Safety

It is the responsibility of skippers and crew to wear US Coast Guard approved life jackets whenever conditions warrant. Furthermore, as a condition of participation in any race, the owner and crew agree that the safety of the boat and her crew and the decision whether or not to start or continue a race is solely their responsibility.

Prizes

Prizes 1st through 3rd will be awarded in each division.

Racing Area & Marks



- | | | | |
|---|--|--|--|
| A Bell "1" (flasher) Little Capt. Is. E. Reef. | J Special Indian Harbor mark off Calf Island. | Q Special mark approx. 1/4 mi. to leeward of the start. | V Special Riverside mark west of Sugar Boat. |
| B Red Nun "2," Flat Neck Point. | K Red Nun "4," Greenwich Hbr. | R Special Belle Haven mark off Belle Haven Y.C. | W Special Riverside mark 1/4 mi. ENE of Red Rock. |
| C Special mark, approximately 1 1/2 mi. to windward of start. Committee boat will indicate magnetic bearing. | L Red Nun "2," Greenwich Hbr. | S Special mark, approximately 3/4 mi. to windward of start. Committee boat will indicate magnetic bearing. | X Special Indian Harbor mark SW of Tweed Is. |
| D Red Gong "32-A" (flasher) mid-channel buoy. | M Special reaching mark, positioned on a line which is an extension of the starting line. | T Special mark on the opposite side of the starting line from the Starting Line; may be used as a rounding mark and/or finishing mark. | Y Special mark approx. 1/2 mi. to windward of start. Committee boat will indicate magnetic bearing. |
| G Red Bell "36," Bluefish Shoal. | N Special mark, approximately 1/2 mi. to leeward of the start. | U Special Indian Harbor mark NNE of Great Captain Island Light. | Z Special mark approx. 1 mi. to windward of start. Committee boat will indicate magnetic bearing. |
| H Red Nun "2," Great Captain Island west reef. | P Special Riverside mark North of Wee Captain Is. | | |